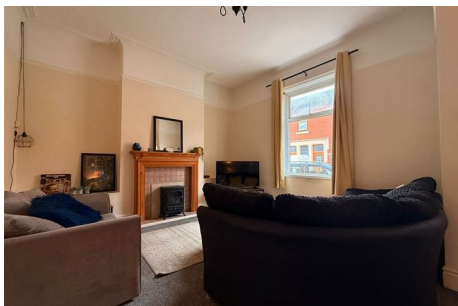


GUILDHALL

SALES & LETTINGS

Shelley Road, Preston, PR2

Offers Over £125,000



- 3 Bedrooms
- Street parking Available
- EPC Rating: D
- 1 Receptions
- Tenure: Freehold
- 1 Bathroom
- Council Tax Band: A

Contact us for more details:
Tel: 01772769999 Email:

Full listings online at <https://guildhalllettings.co.uk/>